

Configurations, Troubleshooting, and Advanced Secure Browser Application Installation Guide for Mac

for Technology Staff

2021–2022

Published April 13, 2022

Prepared by Cambium Assessment, Inc.



Configurations, Troubleshooting, and Advanced Secure Browser Application Installation Guide for Mac1

Configurations, Troubleshooting, and Advanced Secure Browser Application Installation for Mac 3

- How to Configure Mac Workstations for Online Testing 3
 - About Assessment Mode 3
 - How to Download and Install the Mac Secure Profile..... 3
 - How to Disable Updates to Third-Party Apps 4
 - How to Disable Fast User Switching..... 5
 - How to Install Rosetta 2 8
- How to Install the Secure Browser Application for Mac Using Advanced Methods 9
 - How to Clone the Secure Browser Application Installation to Other Macs..... 9
 - How to Uninstall the Secure Browser Application on Mac 9
- How to Troubleshoot Mac Workstations 10
 - How to Reset Secure Browser Application Profiles on Mac..... 10
 - How to Navigate to the Tool Menu with the Keyboard Using a Safari Browser..... 10
 - How to Disable Text-to-Speech Keyboard Shortcut..... 11
- How to Configure Networks for Online Testing..... 12
 - Resources to Add to Your Allowlist for Online Testing 12
 - URLs for Non-Testing Sites to Add to Your Allowlist 12
 - URLs for Test Administrator and Student Testing Sites to Add to Your Allowlist 12
 - URLs for Online Dictionary and Thesaurus to Add to Your Allowlist 13
 - Domains for Email Exchange Server and Single Sign-On System..... 13
 - Ports and Protocols Required for Online Testing 13
 - How to Configure Filtering Systems..... 13
 - How to Configure for Domain Name Resolution..... 13
 - How to Configure Network Settings for Online Testing 13
 - How to Configure the Secure Browser Application for Proxy Servers 14
- Change Log 16

Configurations, Troubleshooting, and Advanced Secure Browser Application Installation for Mac

This document contains configurations, troubleshooting, and advanced Secure Browser application installation instructions for your network and Mac workstations.

How to Configure Mac Workstations for Online Testing

This section contains additional configurations for Mac.

Mac workstations running macOS 10.13–10.15 require the following configurations be performed before testing begins:

- [Download and install the Secure Profile](#)
- [Disable third-party app updates](#)
- [Disable fast user switching](#)

This section includes the instructions for these configurations.

About Assessment Mode

A feature in macOS 11.4 and higher called Assessment Mode (AM) works with the Secure Browser application to lock down Mac workstations for online testing. AM requires no setup. Once the Secure Browser application is launched on a Mac workstation running macOS 11.4 or higher, AM kicks in automatically. Workstations running macOS 11.4 or higher require no further configuration prior to testing.

For more information about AM, including a list of features it disables, please visit <https://support.apple.com/en-us/HT204775>.

How to Download and Install the Mac Secure Profile

The Secure Profile is a configuration profile that can be used to configure Mac workstations running macOS 10.13–10.15 for online testing. It can be downloaded from your portal's Secure Browser page and must be installed, along with the Secure Browser, before testing begins.

The Secure Profile disables the hot keys for enabling Mission Control, Spaces, Screenshots, and Dictation, and the trackpad gestures for accessing Lookup, App Exposé, Launchpad, and Show Desktop. It sets function keys to standard functions for all users of the Mac to which it is deployed and disables Voice Control and the menu pop-up that appears when triple-tapping the power button on Touch Bar-enabled devices. It also prevents the device from receiving files via AirDrop and the ability to have your Mac identify items under the pointer. If you do not install the Secure Profile, the features listed in this paragraph must be disabled manually. Even if you do install the Secure Profile, the features listed in the bullet points above must still be disabled manually.

Because the Secure Profile configures the operating system regardless of the operating system's current settings, there is no way for CAI to create a configuration profile to roll back the changes.

Before you install the Secure Profile, you should back up your device profile's preferences and settings. Once the device is no longer used for testing, the profile can be removed, and your original settings can be reapplied.

To revert configurations made by the Secure Profile if you did not create a backup of your device profile's preferences and settings prior to installation, the features listed in the paragraph above must be re-enabled manually. These features can be re-enabled through System Preferences. If you need assistance, including reapplying settings to multiple devices at once, contact Texas Testing Support.

The Secure Profile was last updated in spring 2021. If you have an older version installed, please download the latest version from your portal and install it using the following instructions:

1. Click the **Download the Secure Profile** link on the Mac tab of your portal's Secure Browser application's page to download the Mac Secure Profile.
2. Run the Mac Secure Profile installer.
3. Upon installation, restart your computer.

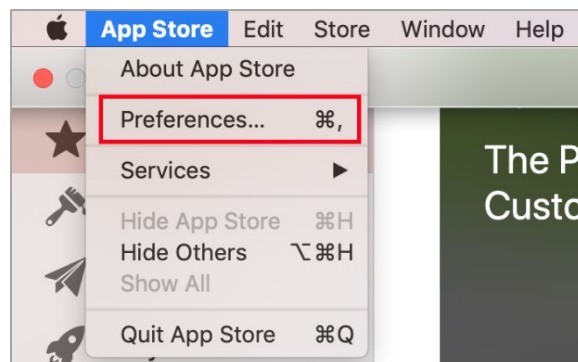
How to Disable Updates to Third-Party Apps

Updates to third-party apps may include components that compromise the testing environment. On workstations running macOS 10.13–10.15, these should be disabled. This section describes how to disable updates to third-party apps.

The following instructions are based on macOS 10.14; similar instructions apply for other supported versions of macOS:

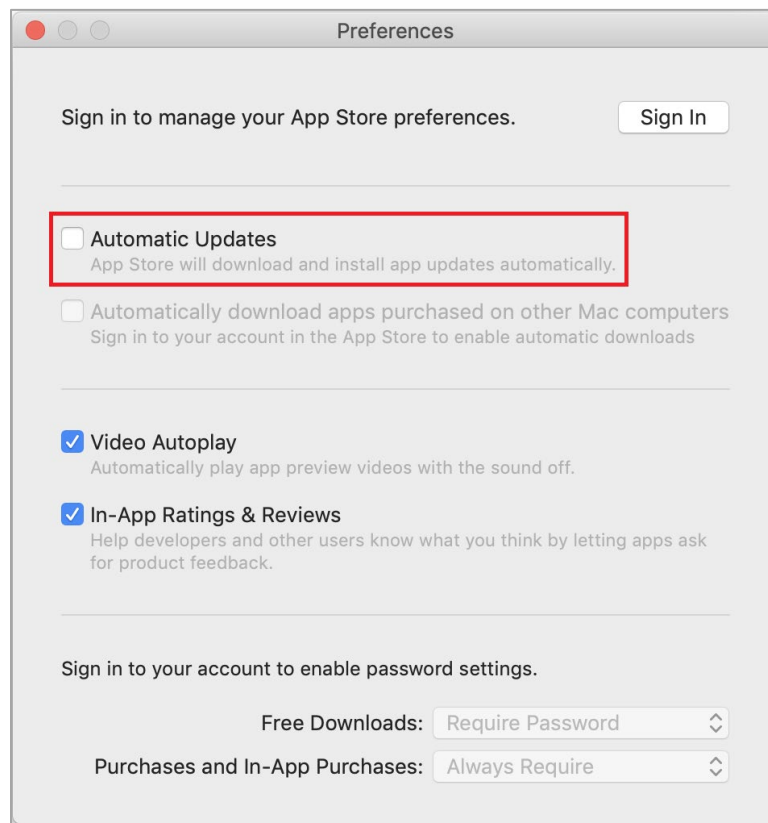
1. Log in to the student's account.
2. Open **App Store**. The **App Store** window opens.
3. From the menu bar, select **App Store**.

Figure 1. App Store Menu Bar Options



4. Select **Preferences**. The **Preferences** window opens.

Figure 2. App Store Preferences



5. Clear the **Automatic Updates** checkbox.

6. Close the **Preferences** and **App Store** windows.

How to Disable Fast User Switching

Fast User Switching is a feature that allows for more than one user to be logged in at the same time. If Fast User Switching is not disabled and students try to access it during a test, the Secure Browser application will pause the test. Fast User Switching should be disabled on all workstations running macOS 10.13–10.15. The following instructions describe how to disable Fast User Switching.

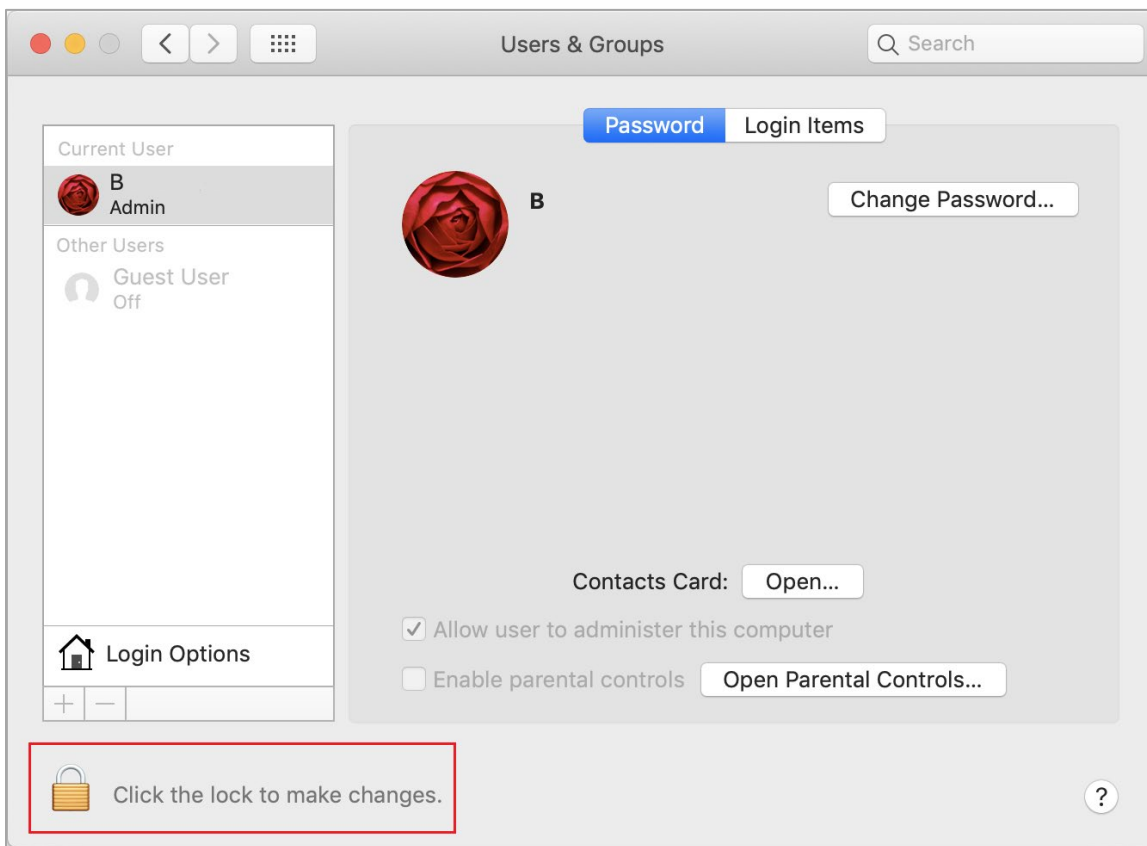
1. Open **System Preferences**. The **System Preferences** window opens.

Figure 3. System Preferences



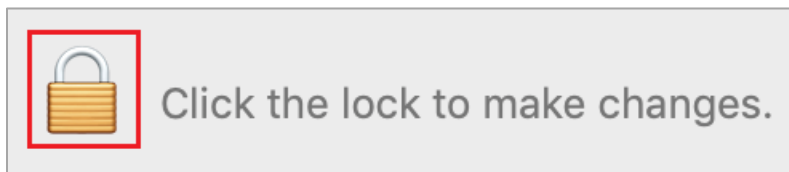
2. Select **Users & Groups**. The **Users & Groups** window opens.

Figure 4. Users & Groups



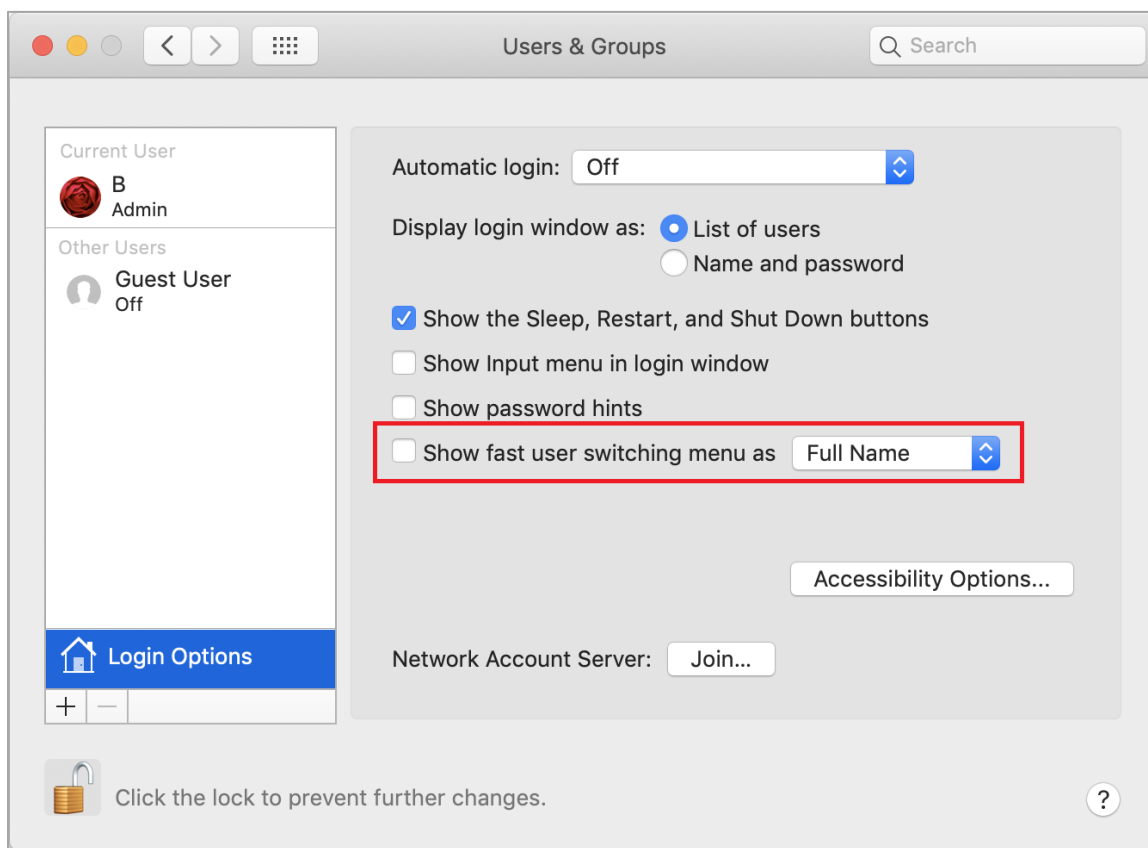
3. If the padlock in the lower left corner is locked, click it and authenticate with administrator credentials.

Figure 5. Users & Groups Padlock



4. Select **Login Options**. The **Login Options** window opens.
5. Clear the **Show fast user switching menu as** checkbox.

Figure 6. Users & Groups—Login Options



6. Close the **Users & Groups** window.

How to Install Rosetta 2

If you are running the Secure Browser application on Apple silicon devices, you must first install Rosetta 2.

Rosetta 2 may already be installed on your Apple silicon device if you needed it to run another Intel-based application. If it is not already installed, a prompt to install it will appear the first time you launch the Secure Browser application.

Rosetta 2 can also be deployed to multiple devices at once through scripting or mobile device management.

For more information about Rosetta 2, including instructions to install it, please see <https://support.apple.com/en-us/HT211861>.

How to Install the Secure Browser Application for Mac Using Advanced Methods

This section contains additional installation instructions for installing the Secure Browser application for Mac.

How to Clone the Secure Browser Application Installation to Other Macs

Depending on your networking and permissions, it may be faster to install the Secure Browser application onto a single Mac, take an image of the disk, and copy the image to other Macs. To do so, perform the following three steps:

1. On the computer from which you will clone the installation, install the Secure Browser application following the directions on your portal. Be sure to run and then close the Secure Browser application after the installation.
2. Clone the image.
3. Deploy the image to the target Macs.

How to Uninstall the Secure Browser Application on Mac

To uninstall the Mac Secure Browser application, drag its folder to the Trash.

How to Troubleshoot Mac Workstations

This section contains troubleshooting tips for Mac.

How to Reset Secure Browser Application Profiles on Mac

If Texas Testing Support advises you to reset the Secure Browser application profile, use the instructions in this section.

1. Log on as an admin user or as the user who installed the Secure Browser application and close any open Secure Browser applications.
2. Start **Finder**.
3. While pressing **Option**, select **Go > Library**. The contents of the Library folder appear.
4. Returning to the Library, open the **Caches** folder, and delete the Secure Browser application's folder.
5. Restart the Secure Browser application.

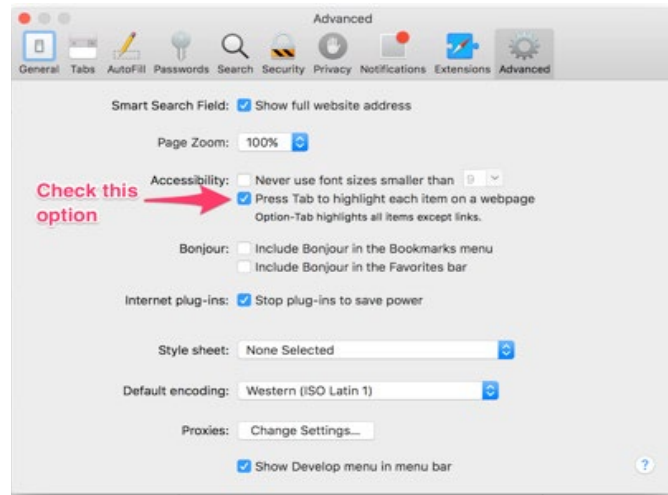
How to Navigate to the Tool Menu with the Keyboard Using a Safari Browser

Students can use any supported public browser for practice tests and navigate to the Tool menu using standard methods, with the exception of Safari. To access the Tool menu using Safari, enable the "Press tab to highlight each item on a webpage" option in Safari Preferences, as shown in Figure 7.

Note: Students who have the text-to-speech (TTS) accommodation enabled for practice tests will need to use the Secure Browser application.

1. Open Safari, and from the Safari menu, click **Preferences**.
2. Click **Advanced**.
3. Mark the checkbox **Press Tab to highlight each item on a webpage**.

Figure 7. Advanced Safari Preferences



How to Disable Text-to-Speech Keyboard Shortcut

A feature in macOS 10.12 (and later versions) allows users to have any text on the screen read aloud by selecting the text and hitting a preset key or set of keys on the keyboard. By default, this feature is disabled and must remain disabled so as not to compromise test security. Do the following to toggle this feature:

1. From the Apple menu, select **System Preferences**.
2. Select **Accessibility**.
3. Select **Speech**. **NOTE:** In macOS 12+, this feature is called Spoken Text.
4. To enable this feature, check the **Speak selected text when the key is pressed** checkbox. To disable, clear the checkbox.

How to Configure Networks for Online Testing

This section contains additional configurations for your network.

Resources to Add to Your Allowlist for Online Testing

This section presents information about the URLs that CAI provides. Ensure that your network’s firewalls are open for these URLs. If your testing network includes devices that perform traffic shaping, packet prioritization, or Quality of Service, ensure that these URLs have high priority.

URLs for Non-Testing Sites to Add to Your Allowlist

[Table 1](#) lists URLs for non-testing sites, such as the Test Information Distribution Engine and Centralized Reporting System (CRS).

Table 1. CAI URLs for Non-Testing Sites

System	URL
Portal and Secure Browser Application installation files	tx.portal.cambiumast.com (TexasAssessment.gov after 9/1/21)
Single Sign-On System	https://sso4.cambiumast.com/auth/realms/texas/account
Test Information Distribution Engine	https://tx.tide.cambiumast.com
Centralized Reporting System	https://tx.reports.cambiumast.com

URLs for Test Administrator and Student Testing Sites to Add to Your Allowlist

Testing servers and satellites may be added or modified during the school year to ensure an optimal testing experience. As a result, CAI strongly encourages you to add the URLs from Table 2 to your allowlist at the root level. This requires using a wildcard. CAI strongly encourages using wildcards when adding these URLs to your allowlist, as servers may be added or removed from the field without notice.

Table 3. CAI and AIR URLs for Testing Sites

System	URL
Test Administrator and Student Testing Sites	*.cambiumtds.com
Assessment Viewing Application	*.tds.cambiumtds.com
	*.cloud1.tds.cambiumtds.com
	*.cloud2.tds.cambiumtds.com
For 2021–2022, users should continue to add both Cambium and AIR URLs listed in this table to their allowlist.	*.cambiumast.com
	*.tds.cambiumast.com
	*.cloud1.tds.cambiumast.com
	*.cloud2.tds.cambiumast.com

URLs for Online Dictionary and Thesaurus to Add to Your Allowlist

Some online assessments contain an embedded dictionary and thesaurus provided by Merriam-Webster. The Merriam-Webster URLs listed in [Table 4](#) should be added to your allowlist to ensure that students can use them during testing.

Table 4. CAI URLs for Online Dictionaries and Thesauruses

Domain Name	IP Address
media.merriam-webster.com	64.124.231.250
www.dictionaryapi.com	64.124.231.250

Domains for Email Exchange Server and Single Sign-On System

CAI systems send emails for password resets and login codes for the SSO system from cambiumast.com and from cambiumassessment.com. Add both domains to your allowlist to ensure that you receive these emails.

Ports and Protocols Required for Online Testing

[Table 5](#) lists the ports and protocols used by the Test Delivery System. Ensure that all content filters, firewalls, and proxy servers are open accordingly.

Table 5. Ports and Protocols for the Test Delivery System

Port/Protocol	Purpose
80/TCP	HTTP (initial connection only)
443/TCP	HTTPS (secure connection)

How to Configure Filtering Systems

If the campus’s filtering system has both internal and external filtering, the URLs for the testing sites (see [Table 3](#)) must be added to your allowlist in both filters. Ensure that your filtering system is not configured to perform packet inspection on traffic to CAI servers. Please see your vendor’s documentation for specific instructions. Also, be sure to add these URLs to your allowlist in any multilayer filtering system (such as local and global layers). Ensure all items that handle traffic to *.tds.cambiumast.com and *.tds.cambiumast.com have the entire certificate chain and are using the latest TLS 1.2 protocol.

How to Configure for Domain Name Resolution

[Table 1](#) and [Table 3](#) list the domain names for CAI’s testing and non-testing applications. Ensure that the testing machines have access to a server that can resolve these names.

How to Configure Network Settings for Online Testing

Local area network (LAN) settings on testing machines should be set to automatically detect network settings. To configure these settings, do the following:

1. Open **System Preferences**.
2. Open **Network**.
3. Select **Ethernet** for wired connections or **Wi-Fi** for wireless connections.
4. Click **Advanced**.
5. Click the **Proxies** tab.
6. Click the **Auto Proxy Discovery** checkbox.
7. Click **OK** to close the window.
8. Click **Apply** to close **Network** window.
9. Close **System Preferences**.

How to Configure the Secure Browser Application for Proxy Servers

By default, the Secure Browser application attempts to detect the settings for your network’s web proxy server. However, users of web proxies should execute a proxy command once from the command prompt. This command does not need to be added to the Secure Browser application shortcut. [Table 6](#) lists the form of the command for different settings and operating systems. To execute these commands from the command line, change to the directory containing the Secure Browser application’s executable file.

Note: Domain names in the commands in [Table 6](#) use the domain proxy.com. When configuring for a proxy server, use your actual proxy server host name.

Table 6. Specifying Proxy Settings Using the Command Line

Description	System	Command
Use the browser without any proxy.	Mac	<code>./TXSecureBrowser -proxy 0 https://tx.tds.cambiumast.com/student</code>
Set the proxy for HTTP requests only.	Mac	<code>./TXSecureBrowser -proxy 1:http:proxy.com:8080 https://tx.tds.cambiumast.com/student</code>
Set the proxy for all protocols to mimic the “Use this proxy server for all protocols” of Firefox.	Mac	<code>./TXSecureBrowser -proxy 1:*:proxy.com:8080 https://tx.tds.cambiumast.com/student</code>
Specify the URL of the PAC file.	Mac	<code>./TXSecureBrowser -proxy 2:proxy.com https://tx.tds.cambiumast.com/student</code>
Auto-detect proxy settings.	Mac	<code>./TXSecureBrowser -proxy 4 https://tx.tds.cambiumast.com/student</code>

Configurations, Troubleshooting, and Advanced Secure Browser Application Installation Guide for Mac

Use the system proxy setting (default).	Mac	./TXSecureBrowser -proxy 5 https://tx.tds.cambiumast.com/student
---	-----	---

Change Log

Location	Change	Date
Throughout	Cutover from 2020–2021.	6/18/21
About Assessment Mode	Updated macOS versions that use Assessment Mode	2/23/22
How to Disable Text-to-speech Keyboard Shortcut	Added note about macOS 12+ to step 3.	2/23/22
URLs for TA and Student Testing Sites to Add to your Allowlist	<p>Added to Allowlist:</p> <ul style="list-style-type: none"> *.tds.cambiumtds.com *.cloud1.tds.cambiumtds.com *.cloud2.tds.cambiumtds.com <p>Removed from Allowlist:</p> <ul style="list-style-type: none"> *.airast.org *.tds.airast.org *.cloud1.tds.airast.org *.cloud2.tds.airast.org 	4/4/22
How to Configure Filtering Systems	Updated with new domains.	4/8/22
How to Configure the Secure Browser for Proxy Servers	Updated with new domains.	4/8/22